

*natural element homes*



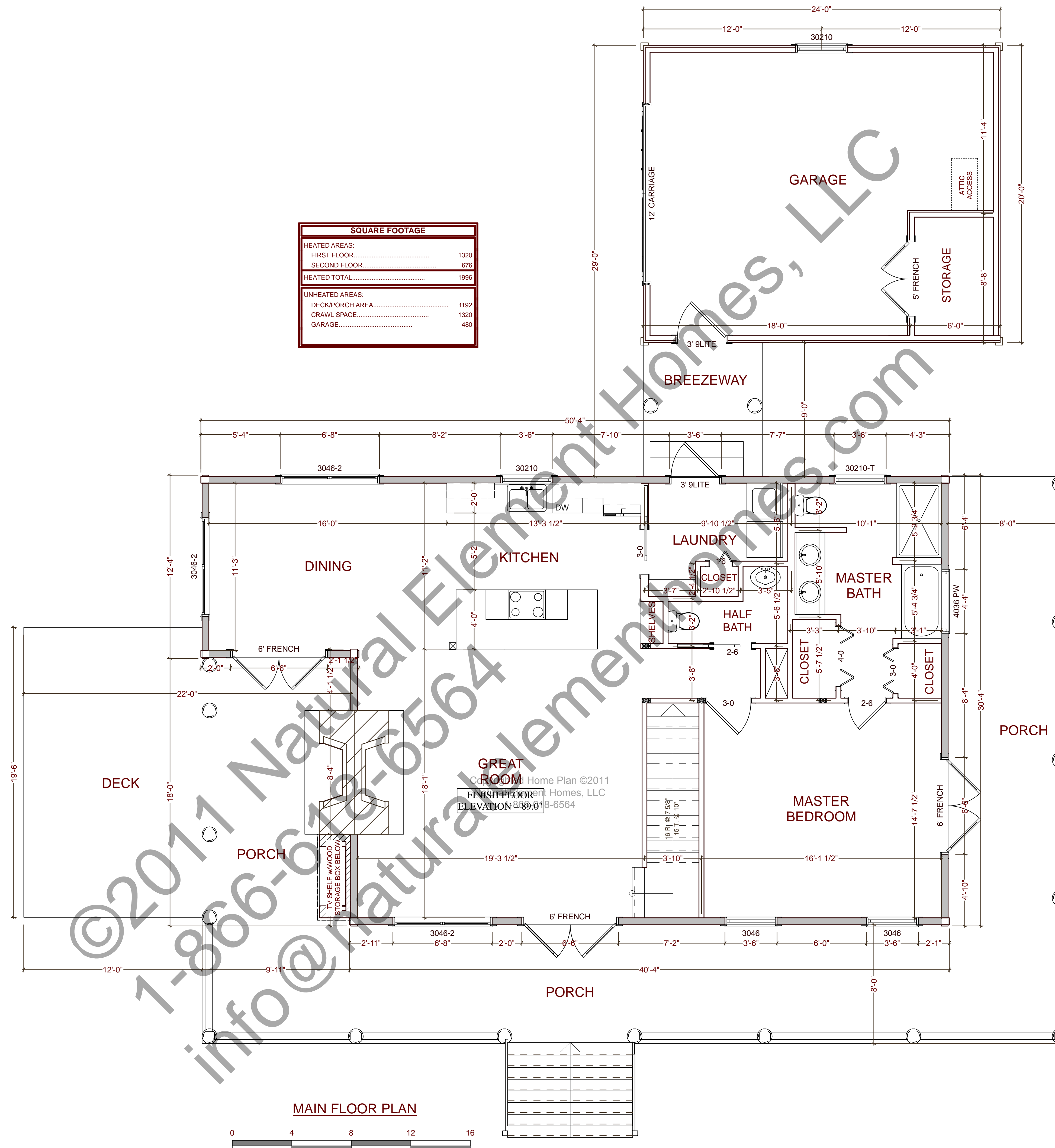
## THE CATCH PEN CABIN

114 County Road 577 <> Englewood, Tennessee <> 1-866-618-6564 <> [www.NaturalElementHomes.com](http://www.NaturalElementHomes.com)

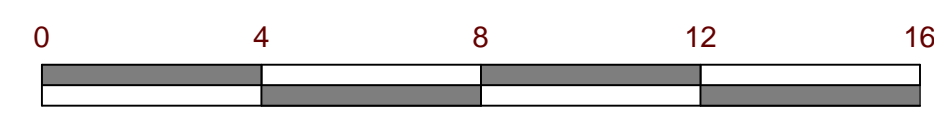


© 2011 Natural Element Homes, LLC

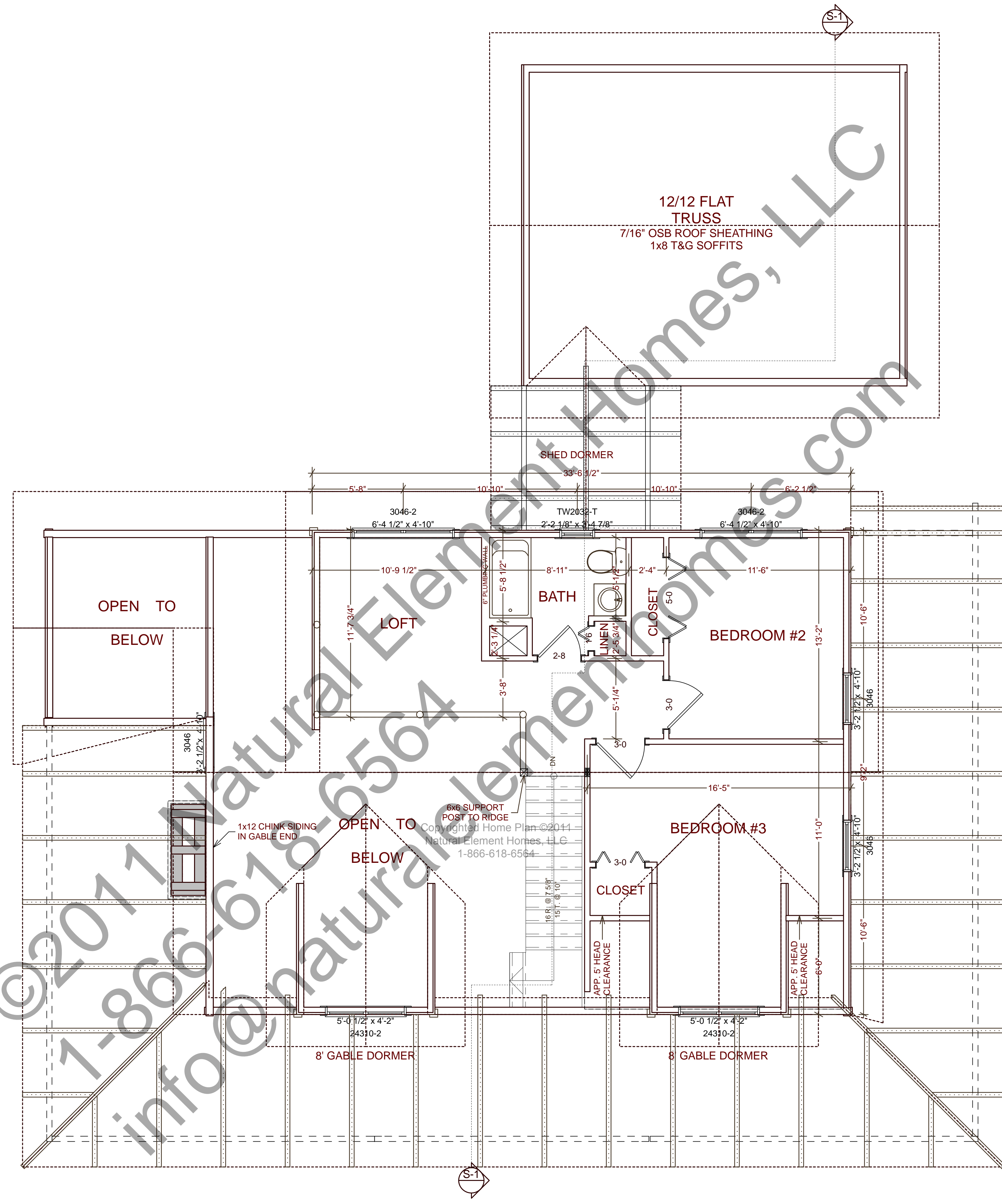
SQUARE FOOTAGE	
HEATED AREAS:	
FIRST FLOOR.....	1320
SECOND FLOOR.....	676
HEATED TOTAL.....	1996
UNHEATED AREAS:	
DECK/PORCH AREA.....	1192
CRAWL SPACE.....	1320
GARAGE.....	480



MAIN FLOOR PLAN

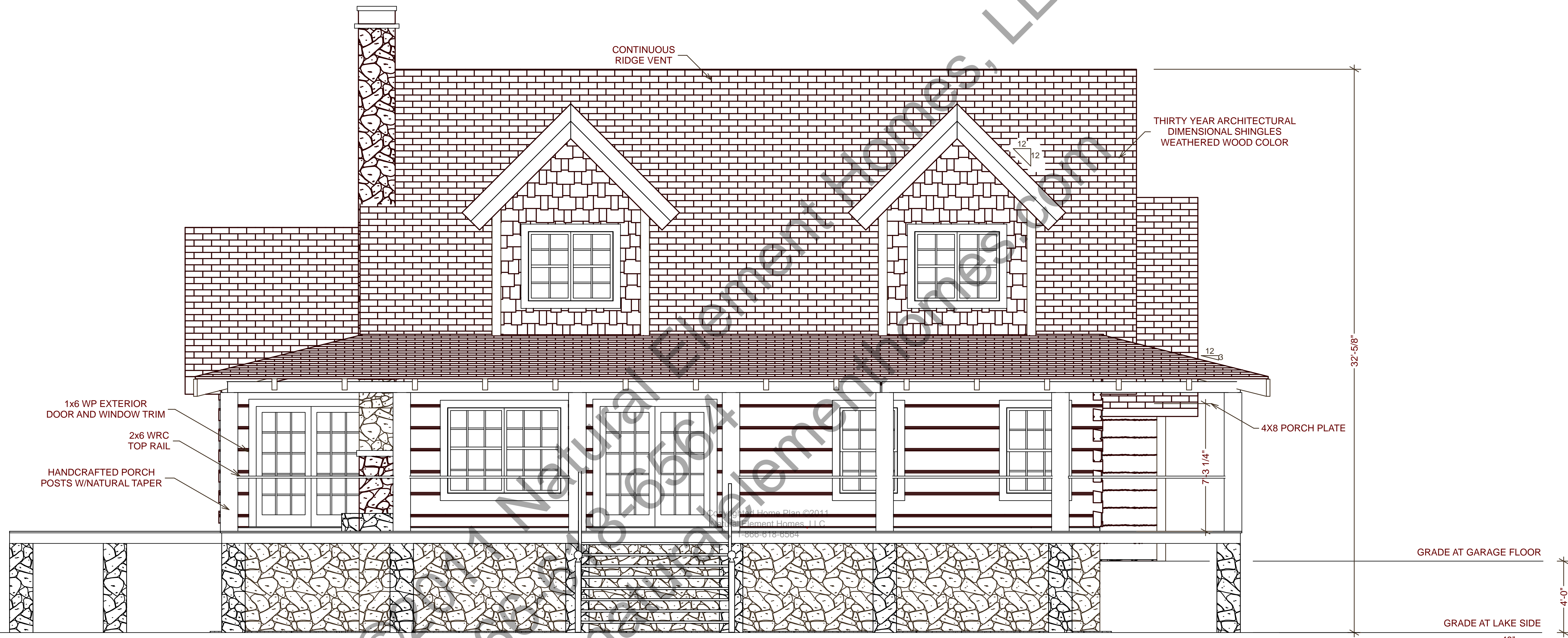


APPROVED BY: \_\_\_\_\_ DATE: \_\_\_\_\_



SECOND FLOOR PLAN

APPROVED BY: \_\_\_\_\_ DATE: \_\_\_\_\_



1x6 WP EXTERIOR  
DOOR AND WINDOW TRIM

2x6 WRC  
TOP RAIL

HANDCRAFTED PORCH  
POSTS W/NATURAL TAPER

CONTINUOUS  
RIDGE VENT

THIRTY YEAR ARCHITECTURAL  
DIMENSIONAL SHINGLES  
WEATHERED WOOD COLOR

32'-5/8"

7'-3 1/4"

4X8 PORCH PLATE

GRADE AT GARAGE FLOOR

GRADE AT LAKE SIDE  
-48"

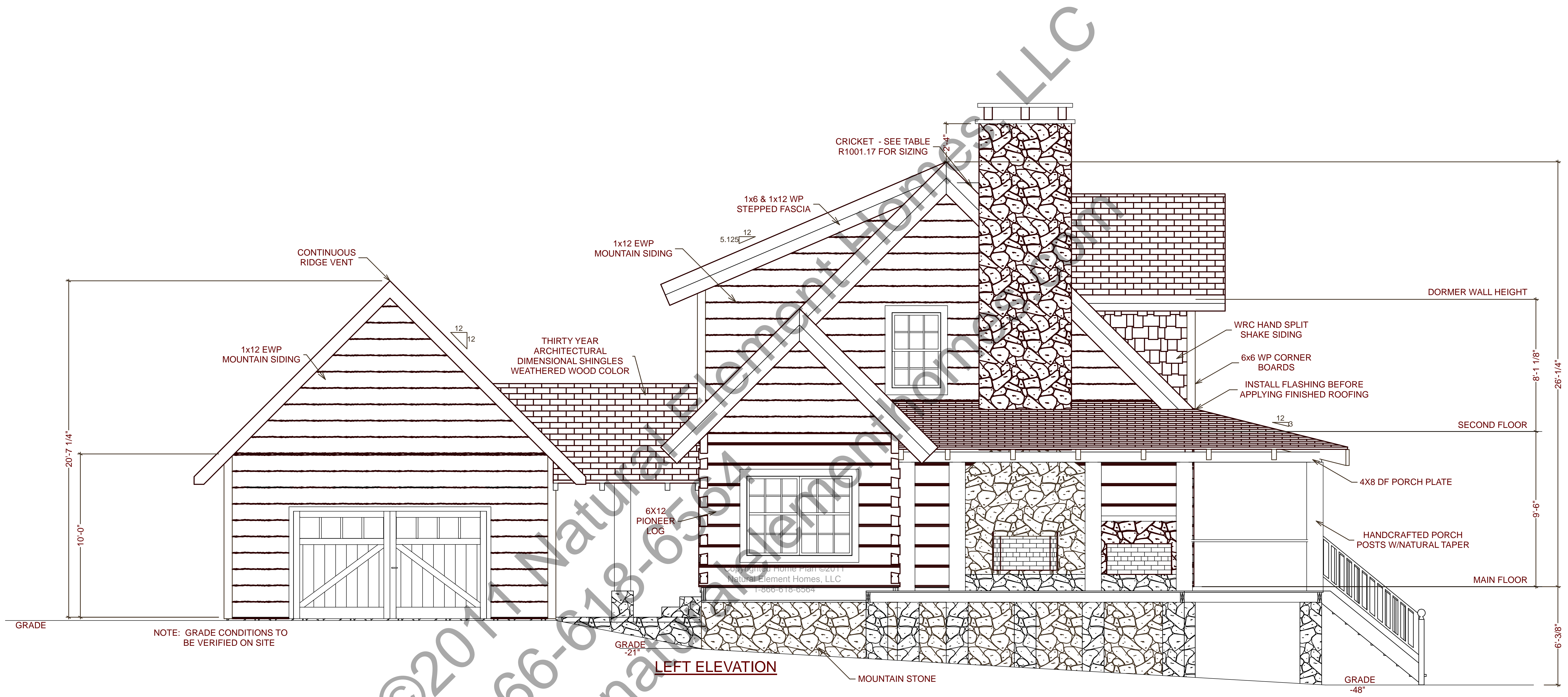
4'-0"

NOTE: GRADE CONDITIONS TO  
BE VERIFIED ON SITE

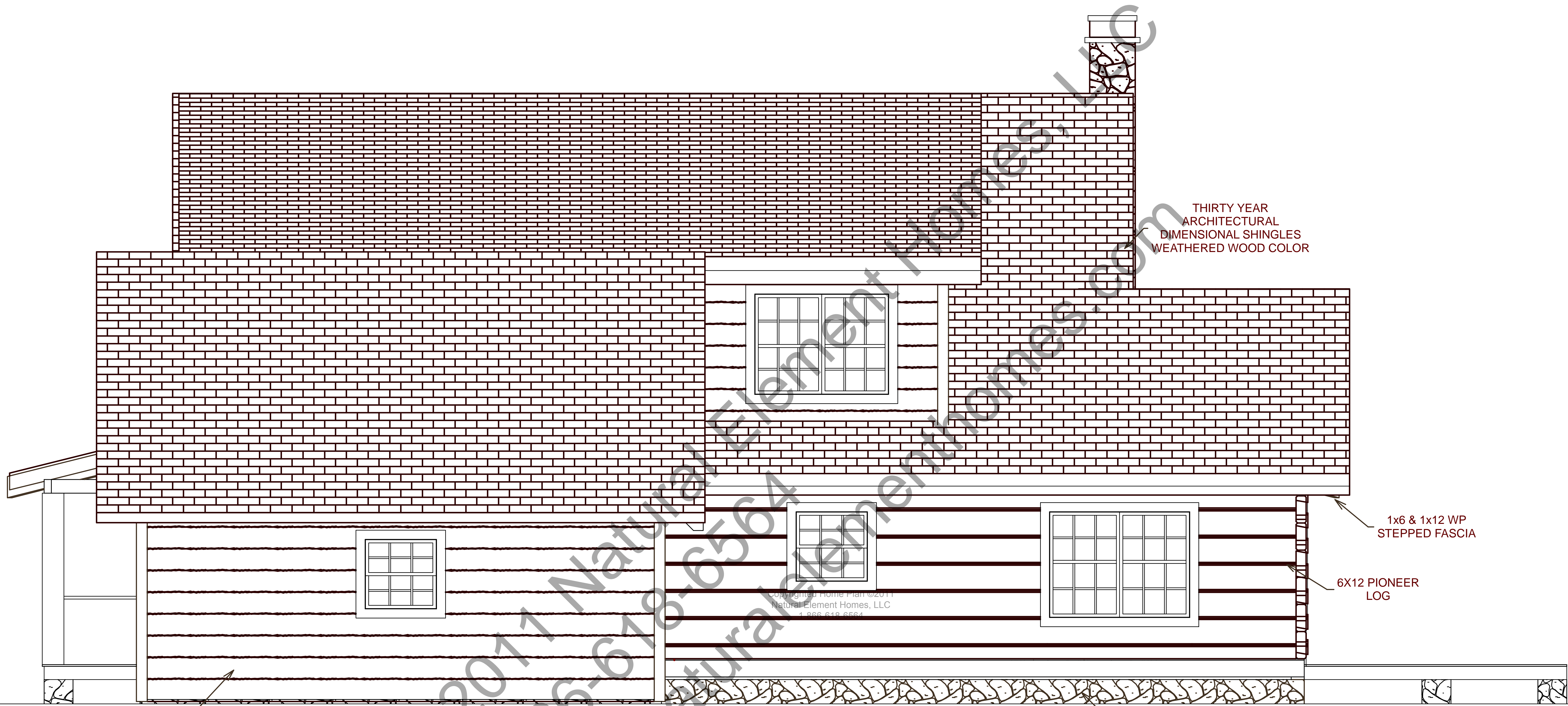
LAKE SIDE ELEVATION

©2011 Element Homes Plan ©2011  
Element Homes, LLC  
1-866-618-6564

APPROVED BY: \_\_\_\_\_ DATE: \_\_\_\_\_



APPROVED BY: \_\_\_\_\_ DATE: \_\_\_\_\_



THIRTY YEAR  
ARCHITECTURAL  
DIMENSIONAL SHINGLES  
WEATHERED WOOD COLOR

1x6 & 1x12 WP  
STEPPED FASCIA

6X12 PIONEER  
LOG

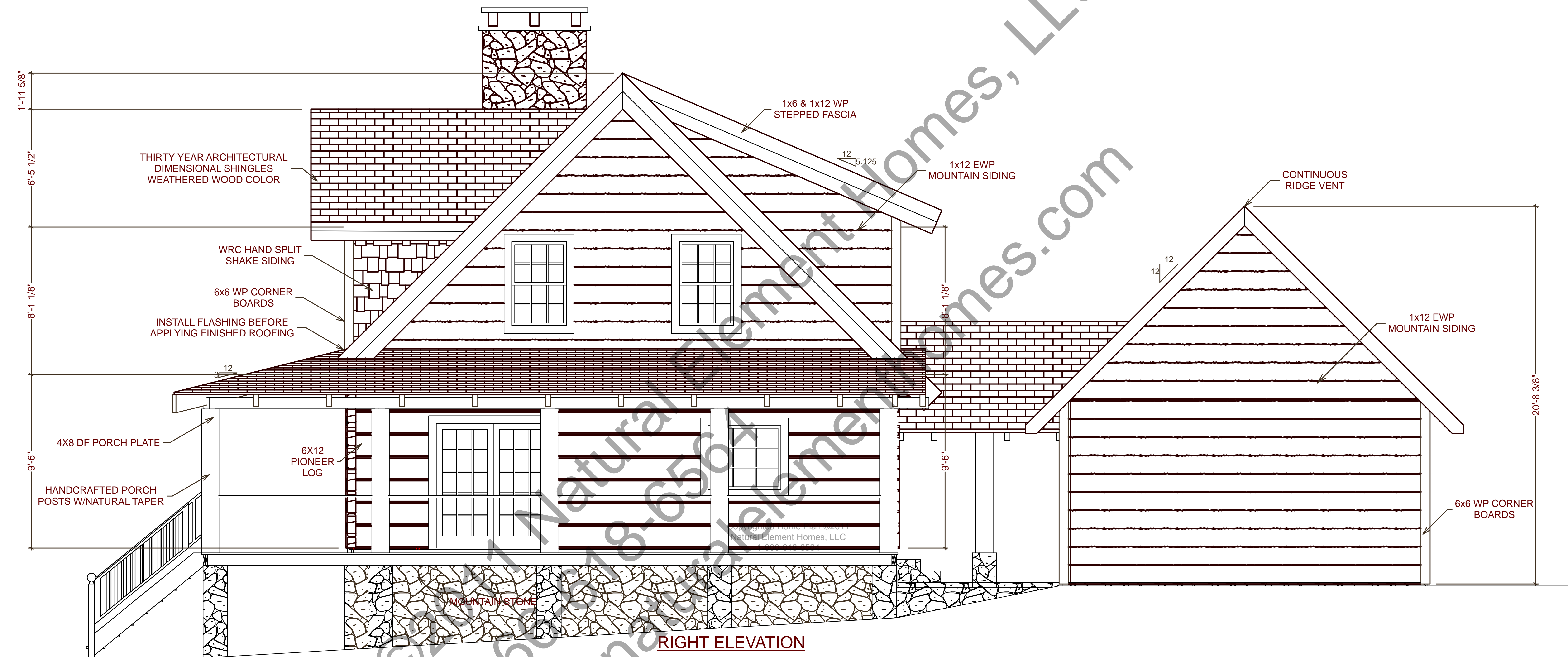
Copyrighted Home Plan ©2011  
Natural Element Homes, LLC  
1-866-618-6564

MOUNTAIN STONE

1x12 EWP  
MOUNTAIN SIDING

**DRIVE ELEVATION**

APPROVED BY: \_\_\_\_\_ DATE: \_\_\_\_\_



APPROVED BY: \_\_\_\_\_ DATE: \_\_\_\_\_